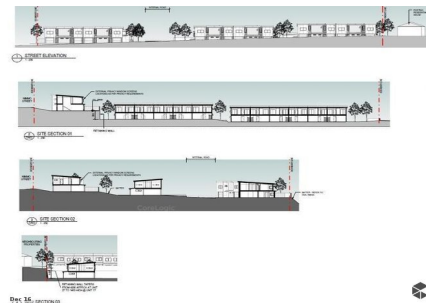
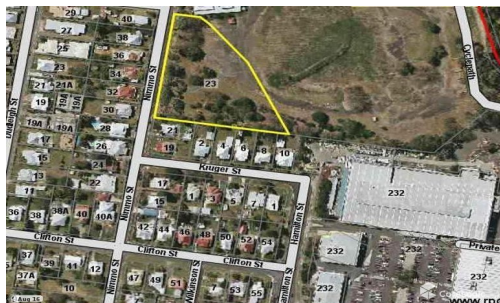


FOR SALE



Sep 18

CoreLogic



23 Nimmo Street, Booval Bc

The City of Ipswich has identified 4 key regional areas. These are Ipswich, Springfield, Ripley & Goodna.

This development site lies in the heart of them all, within a short drive to several shopping centres, public transport, homemaker centres and more than 35 schools, preschools & kindergardens.

The target population of this region is 520,000 by 2041 and the jobs target for that same year is 65,000 additional jobs.

Drive times to surrounding facilities:

- Ipswich Turf Club - 5 minutes
- Booval Fair Shopping Centre - 6 minutes
- Bunnings Bundamba - 6 Minutes
- Ipswich

Price: \$1,600,000

View: remax.com.au/property-details/20448535

Jenny Love

M 0434 371 876

RE/MAX Solutions, Strathpine

Hospital - 10 minutes
Redbank Plaza Shopping Centre - 11 minutes
Booval Train Station - 12 minutes
Bundamba Train Station - 25 minutes

Area Profile:

3.6kms to Ipswich CBD
3.75kms to Riverlink Shopping Centre
9kms to Redbank Plaza Shopping Centre
39kms to Brisbane Airport
28kms to Brisbane CBD
28kmsm to Lake Wivenhoe
75kms to Gold Coast

This growth area of South East Queensland has so much to offer.

To access more information on this investment opportunity, please call Jenny Love on 0434 371 876.