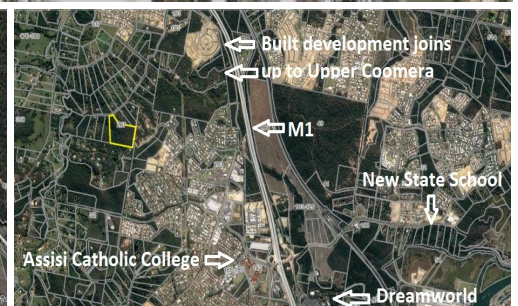
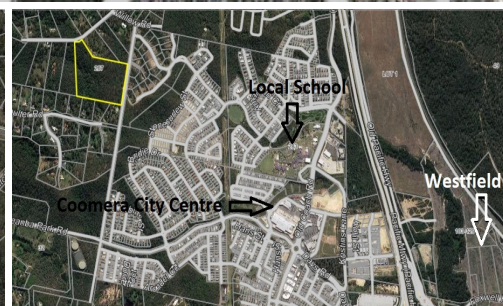
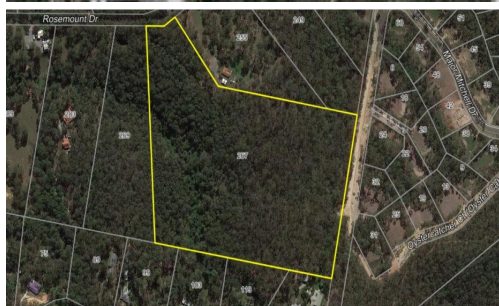
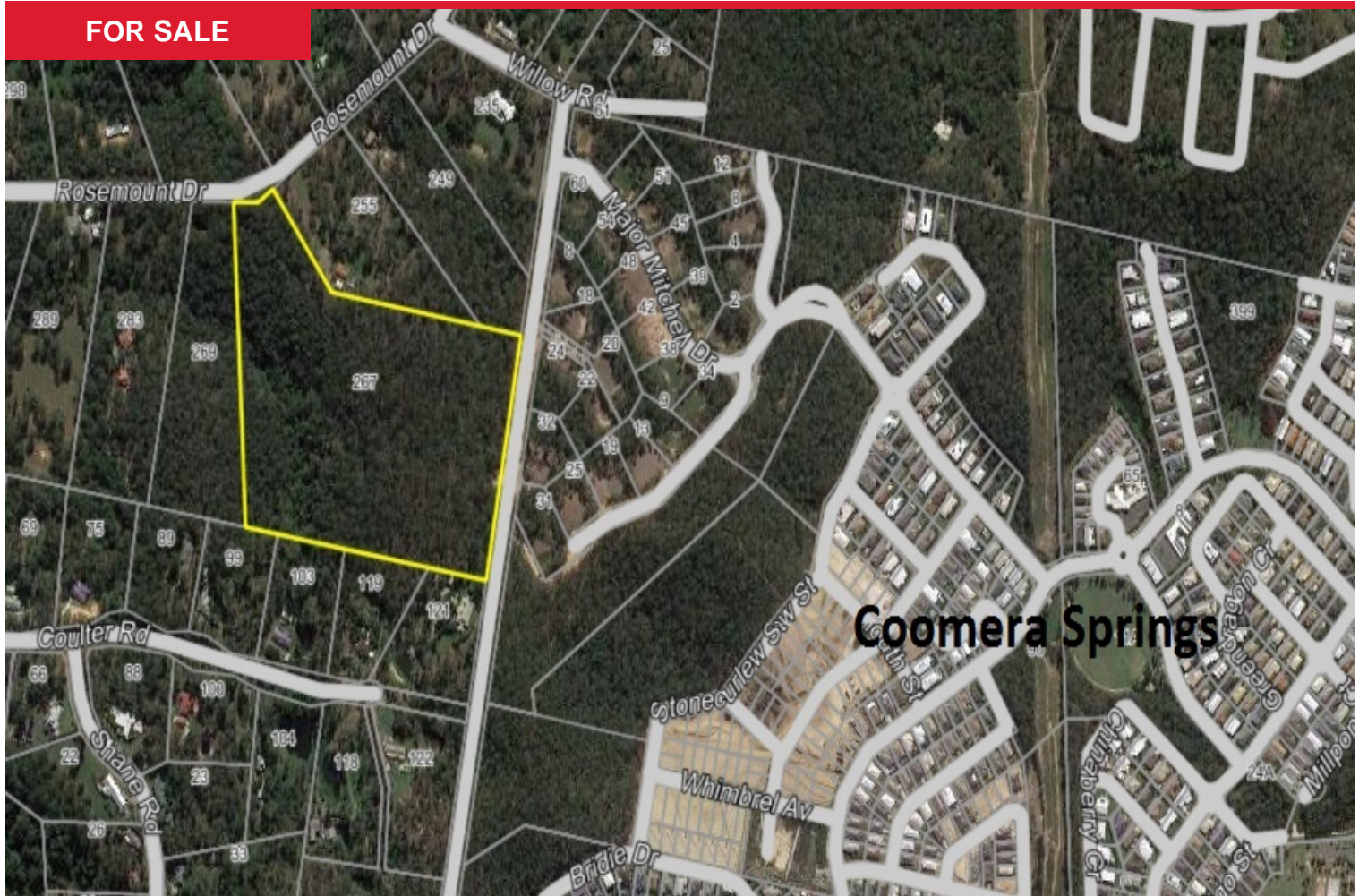


FOR SALE



267 Rosemount Drive, Willowvale

- This prime piece of real estate is situated in the next area of development.
- Goods links to the M1 and Coomera City Centre with Woolworths, Coles, Aldi, TK Maxx etc
- Easy access to a number of local schools.
- Coomera Westfield adds greater shopping variety and cinemas for future home owners
- 11.97 hectares with road access on two sides.
- More recent developments makes this land a natural extension.
- Current Zoning (Rural Residential) allows for sub-division.
- Land over the road with the same zoning achieved sub-divisions around 4,000m2.
- Great for land banking or sub-division.

Price: \$2,500,000

View: remax.com.au/property-details/20408316

Gordon Blatch

M 0476 279 779

RE/MAX Transact, Southport

/>

The land had been previously selectively cleared, so the majority of tree coverage is secondary regrowth. The land is undulating, has large areas of relatively flat land and is bordered by two road frontages for easy developmental access. No flooding is marked on the council maps.